

FEATURED SPONSORS:

RE/MAX COMMUNITY

O: 856-318-2313

100 N BLACKHORSE Pk STE 200D

WILLIAMSTOWN, NJ 08094

HTTP://WWW.REMAXCOMMUNITYNJ.COM/

RE/MAX
COMMUNITY

AnnieMac
Home Mortgage
American Neighborhood Mortgage Acceptance Company
NMLS# 338923
"Real People, Real Stories, Real Solutions"

ANDY CRAIG

BRANCH MANAGER

NMLS# 239091

O: 856-718-3465

C: 856-466-8878

ACRAIG@ANNIE-MAC.COM

ACRAIG.ANNIE-MAC.COM

JOIN US FOR A
**WEDGWOOD GOLF
OUTING**



**WEDNESDAY,
SEPTEMBER 12TH**

REGISTRATION: 12:00 PM

SHOT GUN: 1:00 PM

DINNER: 6:30 PM

TICKETS: \$125

INCLUDES: 18 HOLE ROUND OF GOLF ON CHAMPIONSHIP STYLE COURSE, TICKET FOR HOT DOG & 4 DRINK TICKETS ON COURSE, LONGEST DRIVE CONTEST, CLOSEST TO THE PIN CONTEST, PUTTING CONTEST, MONEY HOLE, BUFFET DINNER, GOLFER SWAG BAG W/ GOODIES & CHANCE TO HIT A HOLE-IN-ONE TO WIN A 2018 TOYOTA TACOMA*!



**BUFFET DINNER ONLY TICKETS
AVAILABLE FOR \$25**

DJ, RAFFLES, 50/50'S, & AWARD PRESENTATION!



WEDGWOOD COUNTRY CLUB

200 HURFFVILLE ROAD

TURNERSVILLE, NJ 08012

856-227-5522

PURCHASE TICKETS ON EVENTBRITE

\$125 - GOLF & DINNER

[HTTPS://BIT.LY/2JFz5UR](https://bit.ly/2JFz5UR)

\$25 - DINNER ONLY

[HTTPS://BIT.LY/2ZYMRMC](https://bit.ly/2ZYMRMC)

FOR HOLE SPONSORSHIP, CONTACT

GEORGE BLEISTINE
CWBPIFF TREASURER
(609) 217-1925

GTB112@GMAIL.COM

YOUR PARTICIPATION BENEFITS:

COLETTE W. BLEISTINE PAYING IT FORWARD FOUNDATION

COLETTEPAYINGITFORWARD.ORG

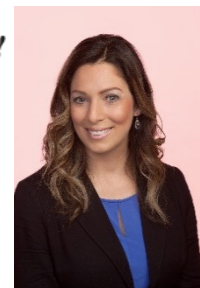
[f @COLETTEWBLEISTINEPAYINGITFORWARDFOUNDATION](https://www.facebook.com/COLETTEWBLEISTINEPAYINGITFORWARDFOUNDATION)



Approaching Two Million!



PRESENTED BY THE
GWCC
GREATER WOODBURY
CHAMBER OF COMMERCE



**NICOLE
MCCAFFERY**

O: 856-318-2313

C: 856-287-4254

100 N Blackhorse Pk
Suite 200D

Williamstown, NJ 08094

**RE/MAX
COMMUNITY**



Space is limited. Ticket purchases are non-refundable. AnnieMac Home Mortgage, 700 East Gate Drive, Suite 400, Mt Laurel, NJ 08054. Licensed by the Pennsylvania Department of Banking as a Mortgage Lender (#33587), American Neighborhood Mortgage Acceptance Company is licensed by the New Jersey, Licensed by the Pennsylvania Department of Banking as a Mortgage Lender (#33587). AnnieMac Home Mortgage Max are separate entities; each is independently responsible for its products and services.

*2018 Toyota Tacoma giveaway sponsored by Re/Max Community. MSRP cannot exceed \$40,000 and actual prize may vary from photo.